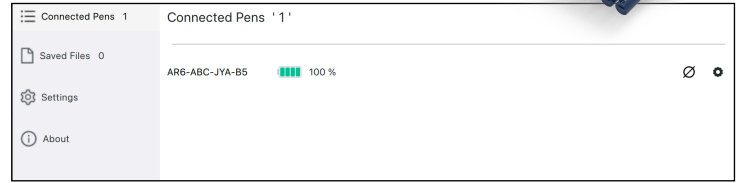




QUICK START GUIDE:

STEP 1:

Connect your pen to your computer, either directly from an individual pen or from a selection of pens connected on your cradle. Open the Classroom Router, and you will see you have “X” connected pens.



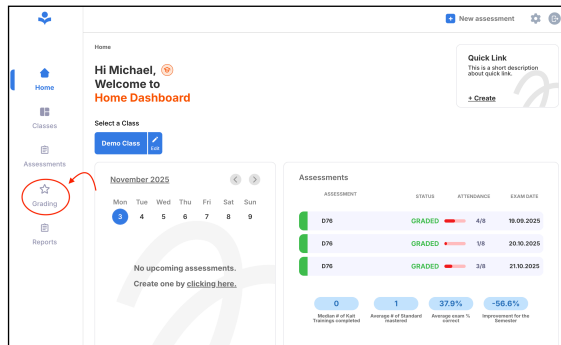
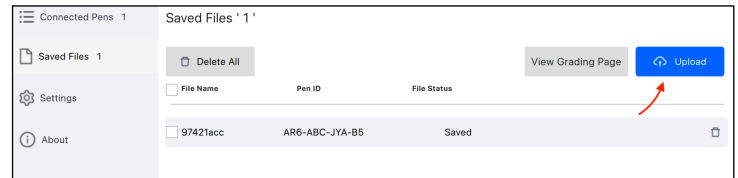
STEP 2:

Your pen, if used for an assignment, will automatically move your pen stroke data to “Saved Files” and remove itself from the pen storage. Ensure your data has been uploaded correctly.



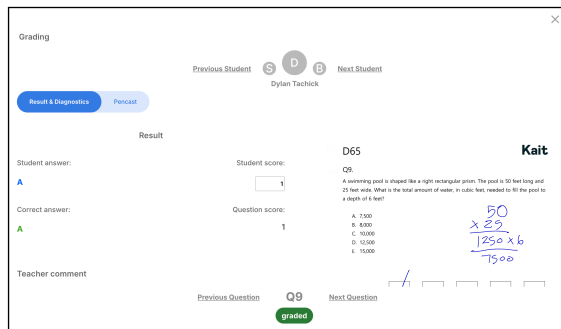
STEP 3:

Select the file you would like to upload to your teacher portal by selecting the check box to the left of each respective saved file. Select and click on “Upload” to send your data for grading and review in the teacher portal.



STEP 4:

Login to your account at kaitsolutions.com and select “Grading” in the left column. You will find all recently uploaded data here. Now select the “Graded” tab to review individual students and their answers. Here you are able to check their work and answers to any assignment given.



NO STROKE FILES:

Upon connecting your pen(s) to the router, it will offload recent pen stroke files into “Saved Files”. Your pen(s) will now read as having no data, ready for the next assignment.



SETTINGS:

Pen Serial Number, Firmware, Battery Percentage, Bluetooth Options